

G.R. Carroll

Electrical Superintendent,
Jones & Laughlin Steel
Corporation, Aliquippa,
PA, President of the As-
sociation of Iron and
Steel Electrical Engineers
for 1935-1936

The President's Message

As the twenty-seventh president of the Association of Iron and Steel Electrical Engineers is officially assuming the honor that has been accorded me by the members of our society, I wish to take this

G.R. CARROLL

ASSOCIATION OF IRON AND STEEL ENGINEERS

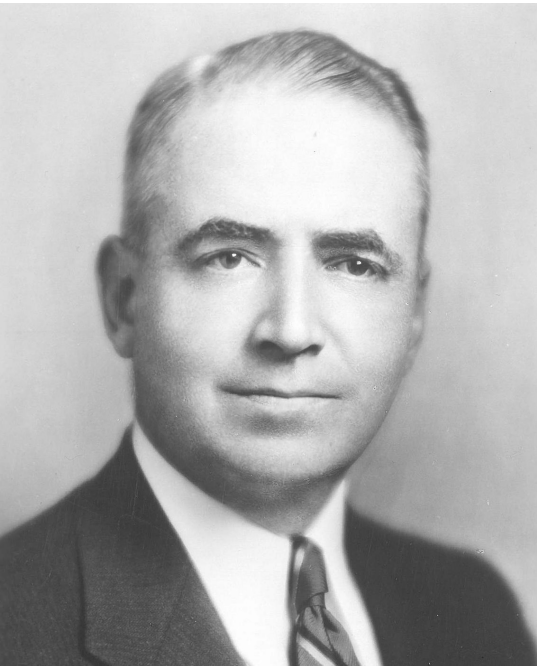
opportunity for reviewing some of the fundamentals responsible for the growth of our society. Motivated by the spirit of controversy, the very basis for the existence of our organization, we have grown from a small group of electrical engineers to one that includes on our roster every type of engineer and operating executive in the steel and allied industries.

By firmly embedding its roots, thereby lacking the vulnerability associated with a rapid mushroom growth, the society grew into its present high standing by proceeding slowly and carefully measuring each step. Well aware of the danger associated with a static position, once a definite program was outlined there was no other method of procedure but a forward movement actuated by a cooperative spirit.

In adhering to these

fundamentals, supplemented by the self-sacrifice and hard work on the part of many of our members, we have seen ourselves become a very important economic factor in the steel industry. It is this responsibility that we must continue to shoulder. Our organization is recognized as performing a function for the industry that is almost indispensable.

With our mature stature, the outlook for the future must be a long range one. A review of what the "Association has accomplished seems voluminous. The future is rich in opportunities to serve the industry further with the present critical demands being made for better quality, special requirements for new and unheard of uses and many other problems making up the highly competitive market of today. The ability and cleverness of the



engineer in the steel industry is one of most essential factors of the rehabilitation that seems to be at hand.

I come into the presidency of this association upon the heels of a man who understood and deeply felt the responsibility of the society. This was clearly evidenced by the manner in which he conducted our affairs through the critical period following the death of our late and honored managing director, and I take his place with the "Association" further advanced than it was when he assumed his office. We new officers must

G.R. CARROLL

ASSOCIATION OF IRON AND STEEL ENGINEERS

pledge ourselves to the same goal. The competitive spirit of outdoing our predecessors must always be dominant.

At the present time we are on the threshold of our 31st convention and iron and steel exposition. This annual gathering represents the focal point of all our activities. A comprehensive well balanced program for the technical sessions has been arranged. Not only will there be papers and discussions on steel mill operations and developments, but related subjects covering industrial relations and distribution of the products of our industry will serve to interest every executive in the steel industry. Our iron and steel exposition promises to be one of the most interesting in years. The equipment manufacturers reserved their space very early in the year in order to have adequate time in

which to prepare educational displays which none of us can afford to miss.

Our path for the coming year is a well-defined one. With the aid of the board of directors and the entire membership, we must plan and work diligently to first make this coming meeting the most successful we have ever had and then shape our efforts to coordinate the activities of all our district sections in order that the year 1935-1936 will be one in which we further the work of the association by utilizing the experiences gained in the past twenty-eight years.

G.R. Carroll
President, AISEE